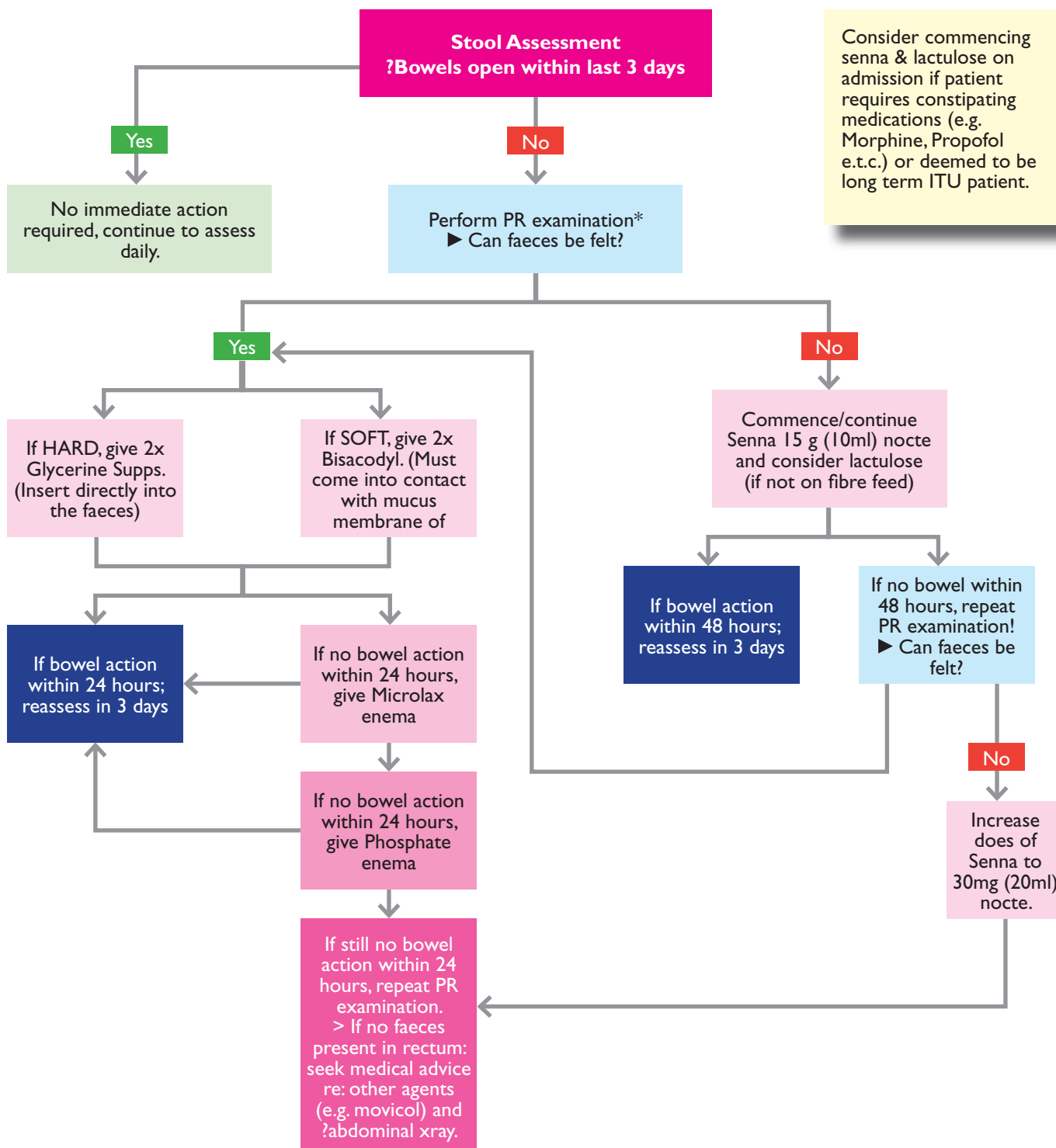


Neuro Intensive Care (Ward 61)

Guidelines for Bowel Management



Consider commencing senna & lactulose on admission if patient requires constipating medications (e.g. Morphine, Propofol e.t.c.) or deemed to be long term ITU patient.

Notes:

- * Refer to hospital procedure manual for guidance on PR examination.
- Note normal bowel function where possible and any relevant past medical history.
- Liaise with medical staff, pharmacist and dietician (re. fibre feeds).
- Assess and document any bowel activity in nursing notes and on 24 hr chart using the Bristol Stool Chart (P.T.O.).
- Please refer to Bowel Management folder for further information and references.

The Bristol Stool Chart



Type 1. Separate hard lumps, like nuts (hard to pass)



Type 2. Sausage-shaped but lumpy



Type 3. Like a sausage but with cracks on the surface



Type 4. Like a sausage or snake, smooth and soft



Type 5. Soft blobs with clear-cut edges (passed easily)



Type 6. Fluffy pieces with ragged edges, a mushy stool



Type 7. Watery, no solid pieces, entirely liquid